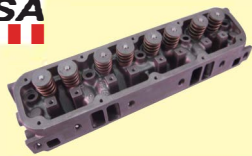




# Chrysler 360 LA & Magnum

317-862-3724  
www.IndyHeads.com  
info@IndyHeads.com



91-03 Magnum castings, these reconditioned heads come assembled with a "like new" appearance and quality with all new Aeromaxx parts installed and a milled deck surface. These heads have outstanding features that include premium one-piece, stainless steel valves, heat treated, machined steel retainers and valve locks along with heavy duty valve springs are good for .525" lift cams.

**Specs:**  
Combustion Chamber Volume: 60cc  
Intake Port Volume: 170cc  
Accepts all stock equipment ie. intake manifolds, exhaust headers and manifolds, valve train, valve covers, and accessory bolt holes.

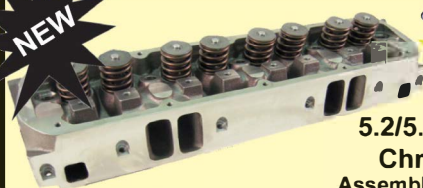


**5.2/5.9 - 318/360**  
**Reconditioned**  
**Chrysler Magnum**

**Assembled with:**  
• 3 Angled Valve Job  
• 1.92 X 1.625 or 2.02 X 1.65 Stainless Valves  
• .525" Lift Valve Springs  
• Seals  
• 7 Degree Locks  
• Chrome Moly Retainers  
• Bronze Guides

**ARO-CY-SBMAG \$599.00**  
Pair/Assembled

**Upgrade Options**  
• Dual Solid or Roller Springs \$96.00  
• Viton Seals \$30.00  
• 10 Degree Locks \$30.00  
• Mill, CC, & Correct Intake \$250.00  
**Port & Polish**  
• Stage I: Bowls & Openings \$250.00  
• Stage II: Chambers, Bowls, & Openings \$450.00  
• Stage III: Full Port & Polish \$750.00



**5.2/5.9 New Cast Iron**  
**Chrysler Magnum**

**Assembled with:**  
• 3 Angled Valve Job  
• 1.92 X 1.625 & Hard Seats  
• 5/16 Stainless Valves  
• .525" Lift Valve Springs  
• 7 Degree Locks & Viton Seals  
• Chrome Moly Retainers  
• Cast Iron Valve Guides

**MAGNUM-X \$995.00**  
Pair/Assembled

**Specs:**  
Combustion Chamber Volume: 62 cc  
Intake Port Volume: 179 cc  
**Upgrade Options**  
• 2.02 Intake Valve \$100.00  
• Dual Solid or Roller Springs \$96.00  
**Port & Polish**  
• Stage I: Bowls & Openings \$250.00  
• Stage II: Chambers, Bowls, & Openings \$450.00  
• Stage III: Full Port & Polish \$750.00

**Indy MA-X**  
Designed for 1991 & newer Magnum 5.2 & 5.9 engines. These are new castings with the 62cc closed chamber, dual exhaust bolt patterns to use standard or W-2 headers. Assembled with premium 1 piece stainless steel valves and premium components. Intake runner is 179cc compared to the stock 170cc. Standard magnum OEM valve gear can be used. Fully adjustable rocker assemblies available.

Accepts all stock equipment ie. intake manifolds, exhaust headers and manifolds, valve train, valve covers, and accessory bolt holes.

**2.055 x 1.600 Long Valve Upgrade \$250.00**  
Allows 1.900 Installed Height, 5/16 Stem SS Valves, 10° Locks & Retainers, Springs up to 650 lift, Roller or Flat Tappet  
Must use adjustable roller rocker assemblies \$285.00



**Edelbrock**  
**Performer RPM Magnum**

**Assembled with:**  
• 3 Angled Valve Job  
• 2.02 X 1.60 Stainless Valves  
• .525" Lift Valve Springs  
• Seals  
• 7 Degree Locks  
• Chrome Moly Retainers  
• Bronze Guides

**EDE-H1-AS-M \$1,435.00**  
Pair/Assembled

**Upgrade Options**  
• Dual Solid or Roller Springs \$96.00  
• Viton Seals \$30.00  
• 10 Degree Locks \$30.00  
• Mill, CC, & Correct Chamber \$250.00  
**Port & Polish**  
• Stage I: Bowls & Openings \$250.00  
• Stage II: Chambers, Bowls, & Openings \$450.00  
• Stage III: Full Port & Polish \$750.00

Designed for 1992 and later 5.2L (318 c.i.d.) and 1993 and later 5.9L (360 c.i.d.) Chrysler Magnum style V8's. Match with the Edelbrock RPM Air-Gap Magnum manifold #7577 for maximum horsepower and torque. Exhaust flanges in stock location to allow use of stock exhaust if desired. Accepts widely available small-block Chevy adjustable rockers (1.6 ratio) and Mopar Performance valve covers.

**Specs:**  
Chamber Volume: 58 cc  
Port Volume: 176 cc  
Accepts all stock equipment ie. intake manifolds, exhaust headers and manifolds, valve train, valve covers, and accessory bolt holes.

## Valve Covers

### Black Wrinkle Cast Aluminum Magnum Valve Cover Set



High-strength cast aluminum valve covers are more rigid than stamped steel, offering better anti-leak properties. Mopar Performance Pentastar logo is cast into each cover. Set includes two valve covers, two oil filler caps, baffle package, gaskets and two grommets. Fits 5.2/5.9 Magnums.

**\$199.00 / Set**  
As Pictured

Valve Covers & Baffles Only \$185.00  
Heavy Duty Magnum Valve Cover Gaskets  
Reusable Rubber with Steel Shim Reinforcement \$20/pr

### Edelbrock Chrysler Magnum V8 EDE-I4-7577 \$350.00

Designed for 1992 & later 5.2L (318 c.i.d.) and 1993 & later 5.9L (360 c.i.d.) Chrysler Magnum V8's, the RPM Air-Gap manifold allows the use of a carburetor on these originally fuel-injected engines for use in early muscle cars and street rods. This dual-plane manifold design incorporates the same race-winning Air-Gap technology that's been used on our Victor Series competition intakes for years for outstanding performance in the 1500 to 6500 rpm range. The Air-Gap design features an open air space that separates the runners from the hot engine oil resulting in a cooler, denser charge for more power.



## Front Timing Chain Cover Kit



Aluminum timing chain cover, aluminum 8 blade water pump, chrome timing cover and pump bolt set, timing cover seal & gaskets.

**Complete Kit Price \$215.00**

Note: Magnum engines require fuel pump block off plate  
Aluminum Timing Chain Cover  
LA - \$70.00 Magnum - \$159.00  
Cool your Mopar with our Hi-Volume 8 Blade Mopar Performance Pump \$75.00 LA Only

P4529256 LA Chrome Timing Cover & Water Pump Bolts \$29.95

**Mopar Aluminum Magnum Heads**  
P4876624 Bare \$950.00  
Assem. - 1.92x1.625 .525 Lift Springs, Seals Moly Retainers \$1,250.00 add \$100 for 2.02 Intake Valves

**Indy Aluminum Roller Rockers**  
Aluminum fully adjustable rocker arms with roller tip & trunnion. Bolt down to fit OEM heads & the Indy MA-X. Set includes 16 rockers and attaching parts. Reuse your guide plates & push rods.  
Magnum OEM 1.6 Ratio \$365.00 Pedestal Mount

Aluminum full roller tip with Trunnion for Edelbrock magnum heads only.  
Edelbrock 1.6 Ratio 3/8 Studs \$240.00 Stud Mount

LA or Magnum

**Mini Starters**  
P5249644AB for TTI Headers Mopar Mini Starter \$170.00  
ALL-337 Pro Torque 1.9 HP for SB/BB \$175.00  
ALL-337M Pro Torque 3.1HP for SB/BB \$330.00  
401-5044 Pro Torque 1.9HP AMC V8 \$225.00

## Block Hardware Kit

A Engines \$34.95  
B-RB Engines \$34.95

## Distributor Hold Down



360-D3-IND Unpainted \$5.95  
360-C3-INDAC Chrome \$12.00

## Mopar Performance Ignition Kit



Includes electronic distributor, wiring harness, orange, ECU, ballast resistor and complete instructions

**Sale Price \$260.00**  
Small Block only

## LA or Magnum

Distributor advance adjustable vacuum advance unit. P3690430 \$199.00

## Electronic Wiring Harness only



P3690152 \$23.00

## Ballast Resistor only



1.25 ohm P5206436 \$9.95

## MOPAR Electronic Control Box

P4120505 Orange Box 6000 RPM \$49.00  
P4120534 Chrome Box 8000 RPM \$71.00  
Orange Box Resistor and Harness Combo \$81.95

52028185AB 5.9 Magnum Thermostat 195 Degree \$20.00  
Magnum Billet Aluminum Thermostat Housing \$40.00  
440-W1-100 Titanium Anodized Billet - LA \$40.00  
P4286759 Mopar Performance chrome - LA \$18.00

## New 360 LA Castings Assembled



All New Parts

1.88 x 1.60 Valves  
.509 Lift Springs  
Hyd. or Flat Tappit

**\$599.00 Per Pair**

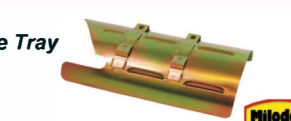
2.02 Intake Valve add \$100.00

## Small Block Car Pan

Street/Strip Fits A, B & E bodies internal pickup. 8 3/4 deep - 8 quarts #30935 for 340 #30940 for 360 \$295.00 Pickup #18345 \$50.00



**Small Block Adj Windage Tray**  
#32230 \$125.00  
#81151 Stud Kit \$75.00



## Small Block Road Race

5 trap doors, great for street and race when low profile is needed. 7" Deep - 7 quarts #31595 for 340 #31595 for 360 \$470.00 Pickup #18343 \$60.00



## Small Block Truck Pan

Street/Strip Fits 2WD or 4WD 10 3/4 deep - 8 quarts #30985 for 360 \$325.00 Pickup #18460 \$55.00



## Canton Small Block Chrysler

This small block Mopar circle, drag, or street pan is for 360 engines in a chassis where a rear sump oil pan can be used. It has a 7" deep, 10-11" long 15" wide sump and 8 quart capacity. The pan features trap door baffles, directional runners, a bolt in sash baffle and a crank scraper. Pan includes a provision for a pan mounted dipstick, a temperature fitting and magnetic drain plug. 11-510 Canton Pan & Pickup \$275.00. Fits LA or Magnum 360



## 5qt Center Sump Oil Pan, Pump & Pickup



New unpainted pan with Melling pump and Mopar Performance pickup \$119.00

Fits LA or Magnum 360