



# 426 Legend Hemi

317-862-3724  
www.IndyHeads.com  
info@IndyHeads.com



**Hemi Single Carb**  
**475 HP**  
**500 Torque**

**\$16,995.00**

**4.250" Bore, 3.750" Stroke, Pump Gas, Dyno Tested & Tuned**  
Fully Prepped Mopar Block  
Eagle 4340 Crank (3.750"x2.375")  
Milodon Pan with 1/2" Pickup  
Comp Hyd. Cam & Lifters(292CH)  
Forged 10.0 to 1 Pistons(1.031 Pins)  
MSD Distributor and ICH Wires

Mopar Performance Iron heads (2.25X1.94)  
Mopar Performance Intake  
Eagle H-Beam Rods (6.860"x1.031")  
750 Holley Carb  
Mopar Performance Valve Covers

Upgrade to 472 or 526 cu. in. **\$500.00**  
Upgrade to Aluminum Heads (Indy 426-S/R) **\$500.00**



**Hemi 2X4 Carb**  
**515 HP**  
**500 Torque**

**\$17,495.00**

**4.250" Bore, 3.750" Stroke, Pump Gas, Dyno Tested & Tuned**  
Fully Prepped Mopar Block  
Eagle 4340 Crank (3.750"x2.375")  
Milodon Pan, 1/2" Pickup  
Comp Hyd. Cam & Lifters(292CH)  
Forged 10.0 to 1 Pistons(1.031 Pins)  
MSD Distributor and ICH Wires

Mopar Performance Iron heads (2.25X1.94)  
426 Mod Man Intake 2X4 Top  
Eagle H-Beam Rods (6.860"x1.031")  
Edelbrock Carbs  
Mopar Performance Valve Covers

Upgrade to 472 or 526 cu. in. **\$500.00**  
Upgrade to Aluminum Heads (Indy 426-S/R) **\$500.00**



**Hemi Cross Ram**  
**545 HP**  
**500 Torque**

**\$19,995.00**

**4.250" Bore, 3.750" Stroke, Pump Gas, Dyno Tested & Tuned**  
Fully Prepped Mopar Block  
Eagle 4340 Crank (3.750"x2.375")  
Milodon Pan, 1/2" Pickup  
Comp Hyd. Cam & Lifters(292CH)  
Forged 10.0 to 1 Pistons(1.031 Pins)  
MSD Distributor and ICH Wires

Mopar Performance Iron heads (2.25X1.94)  
Cross Ram Manifold  
Eagle H-Beam Rods (6.860"x1.031")  
Holley Carbs and linkage  
Mopar Performance Valve Covers

Upgrade to 472 or 526 cu. in. **\$500.00**  
Upgrade to Aluminum Heads (Indy 426-S/R) **\$500.00**



**528 Supercharged Street Legend**

**950 HP**  
**900 Torque**

**Starting at \$27,625.00**

**4.500" Bore, 4.150" Stroke, Pump Gas, Dyno Tested & Tuned**  
Fully Prepped Mopar/World Block  
Eagle 4340 Crank (4.150"x2.375")  
Milodon Pan with 1/2" Pickup  
Comp Roller Cam & Lifters  
Forged 8.5 to 1 Pistons(1.031 Pins)  
MSD Distributor and ICH Wires

426-1 CNC 285 Legend Heads (2.25X1.94)  
Indy Supercharger System  
Eagle H-Beam Rods (6.860"x1.031")  
750 Holley Blower Carbs  
Indy Cast Valve Covers

## 528 / 572 Hemi Rotating Kit



- 8 Bolt Flange
- 10 to 1 Compression
- 4.150 / 4.500 Stroke
- 4.500 Forged Pistons
- Eagle Crank/Rods

Rotating Kit Price:  
**528 cu in \$2,950.00**  
**572 cu in \$2,950.00**  
Short Block Assembled with Mopar Siamese Block:  
**528 cu in \$7,420.00**  
**572 cu in \$7,675.00**

## ON SALE WHILE SUPPLIES LAST!

### 426 Hemi Hydraulic Roller Cam & Lifter Kit



Street, 9.5 to 1, 3000+ up converter, 2300 to 6000 RPM, .5571/.522 - 235/249 HR 107  
**Must use bronze distributor gear. \$675.00**



**572 Race Legend**

**960 HP**  
**760 Torque**

**Starting at \$24,995.00**

**4.500" Bore, 4.500" Stroke, Race Gas, Dyno Tested & Tuned**  
Fully Prepped Mopar/World Block  
Callies 4340 Crank (4.500"x2.200")  
Indy Oiling System  
Comp Roller Cam & Lifters  
Forged 14.5 to 1 Pistons( .990 Pins)  
MSD Distributor and Firecore Wires

426-1RA6 CNC 325 Legend Heads (2.40X1.94)  
Indy Big Volume Intake  
GRP Aluminum Rods (7.150"x.990")  
1150 Ultra Holley Carb  
Indy Cast Valve Covers



## 426-SRK Hemi Head Kit

Complete Kit includes  
Assembled Heads with:

- 2.25 x 1.94 - 200cc Port
- Indy Roller Rocker Arms
- Rocker Side Shims & Springs
- Thick Wall Rocker Shafts Rocker Stand
- Head Studs & Manifold Bolt Kit
- Spark Plug Tubes & O-Rings
- Chrome Valve Covers
- Mod-Man Intake Choice of Tops
- 1x4, 2x4, 3x2 or Blower Top
- Push Rod Kit
- Complete Gasket Set



**\$6,691.00**



## ON SALE 426-1K Legend Kit

Complete Kit includes  
Assembled Heads with:

- Indy Roller Rocker Arms
- Rocker Side Shims & Springs
- Thick Wall Rocker Shafts & Clamp Kit
- Head Studs & Manifold Bolt Kit
- Spark Plug Tubes & O-Rings
- Valve Covers & Bolts
- Push Rod Kit
- 426-2 or 3 Manifold
- Removable Valley Plate
- Shaft Oil Restrictors
- Complete Gasket Set



**\$7,161.00**



## Indy Rocker System for Hemi OEM Heads

Incl. Rockers, Shafts, Aluminum Stands Side Springs, Side Shims 426-R4-27SK Aluminum Stands (OEM Heads)

**\$2,658.00**  
**\$665.00**



## Indy Adjustable Rocker System for Hemi OEM Heads

Incl. Rockers, Shafts, Steel Stands, Clamps Side Springs, Side Shims 426-R4-27SKA Steel Adjustable Stands (OEM Heads)

**\$2,615.00**  
**\$975.00**



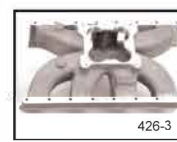
Cosmetic Head Gaskets Pair  
Hemi 4.310/.051 **\$198.00**  
Hemi 4.500/.040 **\$198.00**  
Hemi 4.500/.051 **\$198.00**  
Custom Sizes Available

## Schumacher Hemi Motor Mounts

'66 - '72 B Body  
'70 - '74 E Body  
'66 - '70 C Body **\$269.00**  
'62 - '65 B Body

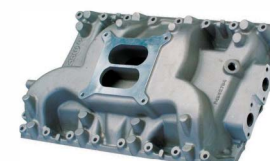


## Legend Manifolds



426-2 4150 Single Plane **\$428.00**  
426-3 4500 Single Plane **\$428.00**  
426-4 4500 Large Volume Single Plane 426-5 **\$595.00**  
Tunnel Ram (Choice of Tops) **\$855.00**  
426-7 Supercharger (16 or 10 Bolt) **\$995.00**  
426-8 Cross Ram (16 Bolt Choice of Tops) **\$1,265.00**

426-20 4150 or 4500 Single Plane with EFI Rails **\$819.00**



**Hemi Dual Plane Intake**  
**Single 4 Barrel**  
P4876188 **\$230.00**

**Hemi Intake - Single Plane 4150 Carb**  
Mopar Performance  
P5153781 **\$295.00**

Intake Bolts **\$40.00**



4140 Chrome Moly Material (1.6 in 1.55 EX Ratios)  
**\$1,349.00**



**Fuel Pump Push Rod Kit**  
push rod access plug  
**\$35.00**



**Hemi Rocker Shafts**  
Extra Thick Wall **\$349.00**  
Special : Buy 4 sets for \$227.00 per set